



"The Lame Horse"
24th June 2009
Sarah Randall BVetMed
CertEP MRCVS
Bury Farm, Slapton



"Dental Care"
29th July 2009
Ricki Watson BVSc MRCVS
Model Farm, Chalfont St Giles



"The Virus"
30th September 2009
Gavin Hamer BVetMed
MRCVS
Bury Farm, Slapton



"Skin Complaints"
28th October 2009
Rich Bristow BVetMed MRCVS
Model Farm, Chalfont St Giles



"Skin Complaints"
25th November 2009
Gavin Hamer BVetMed
MRCVS
Bury Farm, Slapton

Due to the credit crunch we are accepting any donation toward the Brooke no matter how small. **ALL** proceeds to the Brooke. Doors open at 6.30pm. Lecture to start at 7pm prompt. Buffet and drinks will be provided free of charge. Please indicate in the box provided the number of tickets required for each evening. **Cheques to be made payable to "the Brooke"**. Please provide name and address where the tickets are to be sent. Alternatively book on-line through our website.

Name

Address

.....

.....

Tel.....

.....

Email.....

Monty Roberts Breaking Trial

Unspoiled unbroken young horses required for scientific analysis of conventional horses breaking compared to Monty Roberts 'starting'. We are looking for sound geldings between 3 and 5 yrs old, over 15 hands, that are capable of being led and travelling to Sparsholt College for June 22nd - trial ending July 16th. These horses will be drawn places and will be put into a group either to be started with a high standard conventional trainer or with Monty Roberts. There will be no charge to the owners although they will be expected to have their horses vaccinated and have them transported to Sparsholt College for the required start time (and removed at the end of the study). For more information please email ih.office@virgin.net or phone Louise Austin at Intelligent Horsemanship on 01488 71300.

Tamsin Fussey BVSc MRCVS

Due to the expansion of our branch clinic at Bury Farm, Slapton we have appointed a new member to join our team in July. Tamsin graduated from the University of Bristol with distinction and has been working in equine practice in North Bucks. Tamsin is a competitive rider, competing her mare on the BSJA Premier Show Circuit.

Credit Crunch

In these challenging financial times we have already done and will continue to do what we can to minimise any fee increases and contain the cost of drugs and dressings. However, we must ask for the continuing cooperation of ours clients for settling their bills promptly. Many of you are taking up our 5% discount offer for payment received by the end of the next working day following your yard or clinic visit (cash/ debit card). We have enclosed our new terms of business. Thank you for all your support and cooperation in these challenging times.

**Affordable Veterinary Care
For All Equines**

www.chilternequine.com



Chiltern Equine Clinic



**Newsletter
Summer 2009**

Model Farm, Gorelands Lane Chalfont St Giles HP8 4AB Tel: 01494 876555 Fax: 01494 876777	Bury Farm Mill Road Slapton LU7 9BT Tel: 01525 222099 Fax: 01525 222901
---	--

www.chilternequine.com

Chiltern Equine Clinic

We are very proud to announce that.....



Chiltern Equine Clinic has become the first equine practice in Buckinghamshire to be awarded equine hospital status under the Royal College of Veterinary Surgeons Practice Standards Scheme.

Joining the Practice Standards Scheme is a commitment to providing the highest standards of veterinary care, monitored by regular spot checks by the Royal College of Veterinary Surgeons (RCVS). The Scheme consists of three tiers that are awarded based on the facilities offered by the practice, the expertise of its employees and its adherence to strict health and safety, hygiene and legal requirements.

Our hospital in Chalfont St Giles has attained the highest level of accreditation (Tier 3) becoming an RCVS accredited Veterinary Hospital. The hospital provides an impressive range of specialist equipment; 24 hour nursing and veterinary care for in-patients, and a full surgical suite for major operations. Chiltern Equine Clinic's expertise and facilities enable complicated lameness, poor performance and medical investigations to be completed and elective surgery to be performed within the hospital. In addition the hospital is also a British Equine Veterinary Association approved AI centre. Please see the Royal College of Veterinary Surgeons website www.RCVS.org.uk for further information.

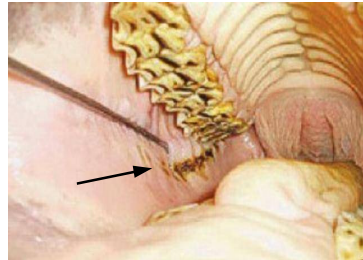
Sarah Randall BVetMed CertEP MRCVS has been awarded "Equine Veterinary Surgeon Of The Year" by British Dressage when she received 95% of the votes from members of the Central Region. Sarah was presented with her award at the British Dressage regional training camp on the evening of 2nd May 2009. Sarah would like to thank all those who voted for her and was overwhelmed by the support she received.

We are very proud to announce that the Chiltern Equine Clinic fund raising efforts for the Brooke have reached a staggering £8590. We appreciate your continued support.

Veterinary Matters

Dentistry

In recent years our clients have become more aware of the nutritional and performance benefits of equine dentistry. Most horses require check-ups every six to twelve months. As a practice we have invested heavily in post graduate training in equine dentistry for all members of our ambulatory team and in the latest dental equipment to enable us to perform optimal treatment.



Ulceration from sharp teeth

In addition complicated dental procedures and tooth extractions are performed in our equine dental clinics held at Model Farm. It is important that dental work performed on horses is both necessary and does not cause interference in the horses normal ability to eat. Power tools should only be used where appropriate and indeed their over use is a growing cause of dental decay in horses.

If you would like to learn more about equine dentistry Ricki Watson will be presenting a lecture on "What every horse owner should know about..... dental care" on 29th July 2009, please see back page for details.

Strangles Awareness

In the last few months Strangles outbreaks have been reported in Oxfordshire, Buckinghamshire and Hertfordshire. We therefore advise all our clients to be vigilant, screen or isolate incoming horses and report horses with nasal discharges, facial swellings or high temperatures to us immediately. To discuss Strangles in more detail please contact us at either of our clinics or speak directly to one of our veterinary surgeons. Together we can stop the spread of this disease.

What are equine gastric ulcers?

Ulcers are an erosion of the horse's stomach lining caused by prolonged exposure to acid produced by the stomach

Which horses get gastric ulcers?

All equines. Surprisingly 63% of performance horses, 37% of leisure horses and 50% of foals.

What causes gastric ulcers?

- Prolonged periods without food
- Stress
- Exercise induced acid regurgitation

How can I tell if my horse has gastric ulcers?

- Behavioural changes
- Poor performance
- Poor appetite
- Weight loss
- Recurrent colic
- Dull coat
- Teeth grinding
- Excessive salivation

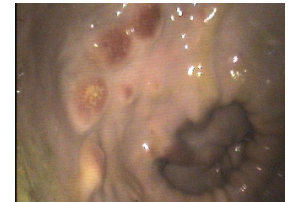
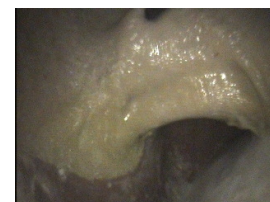
How are gastric ulcers diagnosed?

Gastroscopy can be performed to look inside the stomach. This is a standing procedure performed under light sedation, where a camera is passed via the nose into the horses stomach.

Can gastric ulcers be treated?

Yes this is a very treatable condition once diagnosed.

Chiltern Equine Clinic is once again combining with Merial to provide a free Gastroscopy day. To register your horse please call the clinic as spaces are limited so register early to avoid disappointment. (Date to be confirmed on application).



8 y.o showjumper—Episode of illness and Fever after lethargic, dull, poor appetite, grinding teeth.